

Point of Ayre National Reserve

Meeting Point location

OS Grid Ref
NX 46143 04410

X (Easting), Y (Northing)
246143, 504410

Lat, Long (decimal)
54.411800, -4.3723056

Lat, Long (degs, mins, secs)
54°24'42"N , 004°22'20"W

What3words
autos.meerkats.excite

Directions

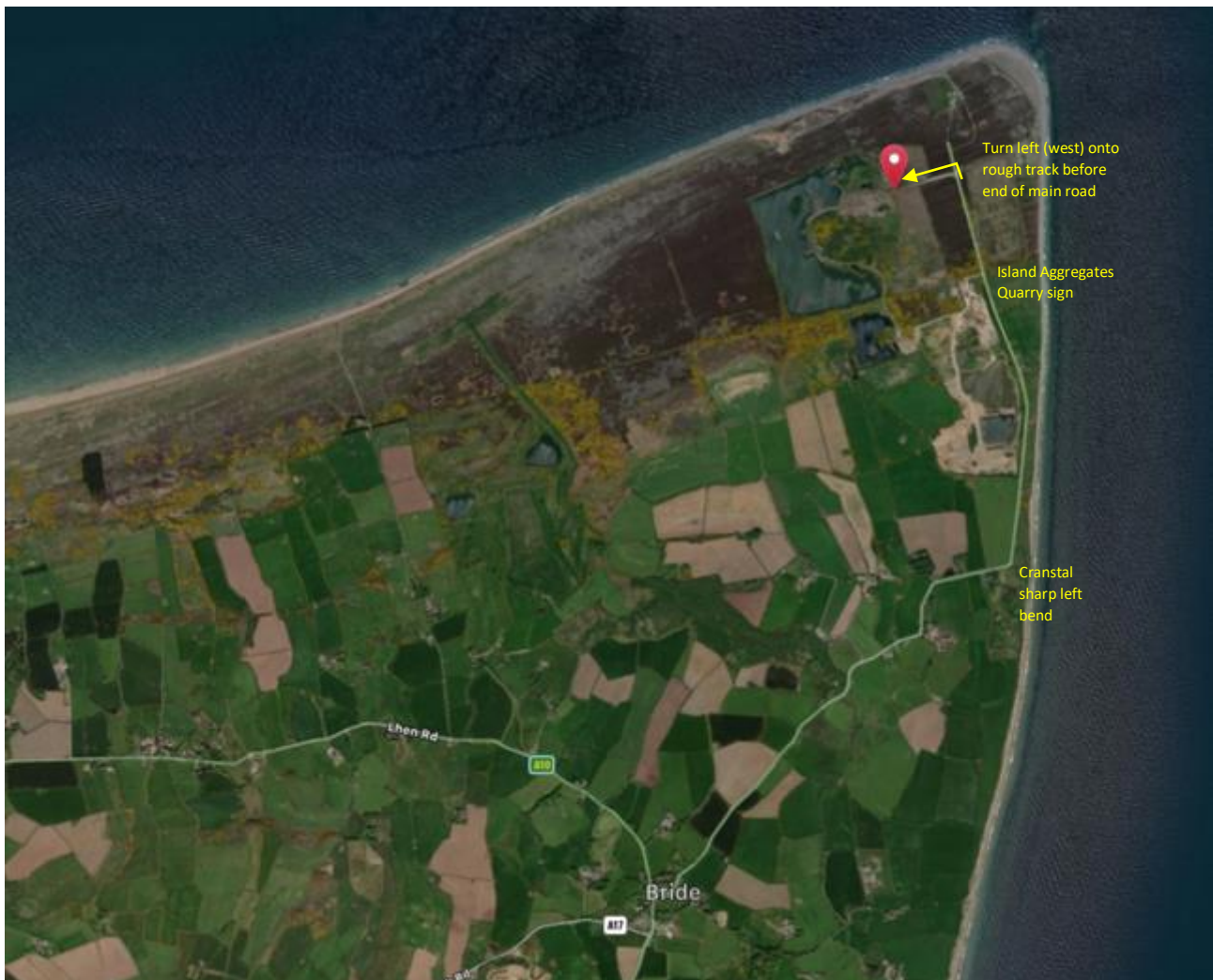
In Bride, at the roundabout by Bride Tea Rooms and the church, leave the A10 eastwards towards Cranstal/Point of Ayre on the A16.

Almost immediately after this, take the first exit at the mini-roundabout, staying on the main A16 northeastwards to Cranstal/Point of Ayre.

Continue for 4.1km – through the sharp left 90-degree bend at Cranstal, past the Island Aggregates Quarry sign and onwards *almost* to the road's end. (If you reach the concrete track to the lighthouse, retrace your route 30m south back along the main road.)

Turn left (west) off the main road onto the rough stone access track. Drive west along this track, passing alongside the tall chain-link fence on your right, and park at the western end of the track by the reserve gates. (Red pin on map).

Please note: There is currently NO PUBLIC ACCESS to the reserve due to health and safety restrictions and works in progress. Visiting is strictly by arrangement with, and under the supervision of, Manx BirdLife staff.



Contacts

Your key contacts are: neil@manxbirdlife.im, 07624 455972
david@manxbirdlife.im, 07984 067846

Facilities

- Fuel/Petrol** Ramsey is the last stop to pick up fuel and to shop for food and drink.
- Toilets** There are no toilets at the Point of Ayre. The nearest public facilities are located in the public car park in Bride adjacent to Bride Tea Rooms and the Church.
- Refreshments** There are no refreshment facilities on the reserve. The Point of Ayre has a limited seasonal take-away tea/coffee service. The nearest café/restaurant services are in Bride, provided by Bride Tea Rooms (01624 882005).

Visiting the reserve

- Access track** **The vehicular access track to the reserve, off the main road, is rough and pitted. Please drive slowly on this track, taking care to avoid the worst of the ruts.**
- Lost/Late arrival** If you are held up on your journey and will be late joining us, or have any other issues finding the meeting point or need to cancel your visit at late notice, please call Neil Morris on 07624 455972 or David Andrews on 07984 067846.
- Walking in the reserve** Visiting the reserve involves a relaxed, gentle stroll of about two to three hours' duration. The terrain is reasonably flat with just a couple of short inclines. Paths are uneven (see 'Footwear' below) with a few minor trip hazards of which to be aware. There are no fences or styles to climb over.
- Cover/Shelter** It is anticipated that we shall have use of a large birdwatching hide during your visit. This will provide enclosed shelter in the case of heavy rain or high winds.
- Clothing** Please dress suitably for the forecasted weather with an extra warm layer just in case. The Point of Ayre is exposed and can be a few degrees colder than the rest of the Island! Please bring a shower/waterproof jacket if the forecast suggests the possibility of rain.
- Footwear** Paths in the reserve are of loose stone/gravel with long grassed sections, the latter being prone to mud and waterlogging after heavy rainfall. Normal walking shoes or heavier duty training shoes with firm soles will suffice during dry periods, but Wellington-type boots are advisable after periods of heavy rainfall.
- Optical equipment** Please bring cameras, binoculars and other birdwatching optics.
- Children** Children under the age of sixteen should be accompanied and supervised by a responsible adult guardian at all times.
- Dogs** Dogs and other pets are not allowed in the reserve.
- We *strongly advise against* leaving dogs in parked cars.** There is no shade or shelter from the sunshine, which even in winter can significantly heat the inside of vehicles.

If you have any questions prior to your visit, please call Neil Morris on 07624 455972 or David Andrews on 07984 067846.

We wish you an enjoyable visit.

*The Manx BirdLife Team,
working in partnership with Island Aggregates and the Royal Society for the Protection of Birds.*